



REGIS COATINGS

PRODUCT CATALOGUE
EDITION 7

CONTENTS

FLOOR COATINGS	EPOTREAD 1000	03
	EPOTREAD G31	04
	EPOTREAD EPOXY CLEAR	04
FLOOR REPAIRS	CRETEX TR	05
	CRETEX SL	05
	EPOTREAD SL250	06
	CRETEX PU	06
	CRETEX FAIRING CREAM	06
CONCRETE TREATMENTS	CRETEX AR	07
	HYDROCHLORIC ACID	07
	OMNI-WASH	07
WATERPROOFING	DUROMASTIC EP HIBUILD	08
	DUROMASTIC AC	08
	DUROMASTIC ACS	08
BITUMEN	DUROMASTIC BE-3	09
	DUROMASTIC ULTRA	09
	DUROMASTIC SB-4	10
	DUROMASTIC SB-150	10
	DUROMASTIC DPS	10
	DUROMASTIC SILVERLEAF	11
	ASPHALT REJUVENATOR	11
ROOF COATINGS	GILSONITE ALUMINIUM	12
	DUROMASTIC M17	12
TOOLS - HIRE - SERVICE		13
ORDERING AND ENQUIRIES		14

Regis, No.1 For Industrial Coatings In NZ

Welcome to REGIS COATINGS where top quality New Zealand made floor paints, epoxy floor coatings, concrete repair compounds, waterproofing membranes and bitumen based coatings go hand-in-hand with the very best in customer service. At Regis Coatings our continued product development is based on decades of on-site experience, therefore offering helpful practical advice and delivering economical solutions to fulfil the varied needs of our customers.

A commitment to keeping right up with “state of the art” technology, places Regis Coatings as a market leader.

The resins and ingredients used in our coatings and fillers are sourced from leading manufacturers globally. Our product range has been thoroughly proven in our unique New Zealand environment as attested to by numerous users.

MANUFACTURER. Have the reassurance you are dealing direct with the manufacturer, with a facility equipped with the latest technology. We are 100% NZ owned and operated and are able to “tailor” formulae to suit your specific needs.

Regis Coatings has three registered trade marks – EPOTREAD, CRETEX and DUROMASTIC, each of which have a range of product under that brand. In addition there are stocks of supplementary and application supplies - thus to carry out work such as floor coating a “one stop shop” service – from start to finish - is available - including grinding, cleaning, etching, filling (of damaged or eroded substrate) and coating.

FOR QUALITY. All REGIS COATINGS products are manufactured and sourced to a stringent quality control system.

Key REGIS COATINGS products undergo constant tests to improve the formulations to increase the performance of the products. This guarantee's the quality of our products is up to the standard that customers expect when they see the REGIS COATINGS brand.

SERVICE. The Regis Coatings warehouse and distribution facility maintain large stocks to ensure fulfilment levels and fast order turnaround.

Our mission is

- Commitment to - Quality Advice
- Commitment to - Quality Service
- Commitment to - Quality Product
- Commitment to - Quality Workmanship

AND - REAL COST EFFECTIVITY

Our diverse range of specialized protective and maintenance products are made available to you through our prompt nationwide delivery service.

OUR EXPERIENCE - YOUR ADVANTAGE



Epotread™ 1000 Semi Gloss

Premium epoxy floor coating

DESCRIPTION

Epotread 1000 is a two-pack heavy duty waterbased epoxy coating manufactured with the latest epoxy resin technology, specially formulated to an equal part 1:1 ratio ensuring speed and accuracy for the applicator.

Epotread 1000 is used extensively for floors of automotive workshops, hangers, warehouses, factories and garages nationwide, providing a very hardwearing and chemical resistant finish.

PRODUCT FEATURES

- Durable and hardwearing
- Incredible adhesion to concrete & timber
- Non-toxic and solvent free
- High chemical resistance
- Withstands heavy traffic
- Apply by brush, roller or airless sprayer
- Excellent fuel, oil and grease resistance
- Easy 1:1 mix ratio (Part A and Part B)
- Resists hydrostatic pressure when cured
- Easy, low cost application
- Available in 12 standard colours, plus tinting on request

USE AREAS

- Floors of automotive workshops, garages, aircraft hangers...
- Factory, warehouse and showroom floors
- Concrete protection in wineries and beverage industries
- Extremely durable and easy clean interior wall finish

APPLICATION INSTRUCTIONS

Surface Preparation

Ensure the substrate is in clean and sound condition. The surface shall be free of dirt, oil, grease and loose material. Pre-painted surfaces must be dry, any loose or bubbling paint must be removed by diamond grinding. New or very smooth concrete should be etched with Hydrochloric Acid then thoroughly waterblasted. If the concrete substrate has a rising dampness issue, apply a primer coat of Epotread Moistureseal.

Cracks can be cut out using a diamond cutting blade on an angle grinder, then filled with Cretex SL epoxy resin.

Mixing Directions

Wear impervious gloves, such as latex or vinyl disposable gloves. Stir the Part A thoroughly to ensure that no pigment has settled, then take an equal quantity of each Part A and Part B and mix together thoroughly until a consistent mix is obtained. A spiral mixer on a low-speed drill is recommended. Ensure that no unmixed ingredient is on the sides or bottom of the pail. Thin 20% with water for the **first coat only** to aid the penetration on unpainted concrete.

Important: Mix Part A and B together thoroughly, add the measured amount of water then thoroughly mix again.

Application

Once mixed the working time is 2 hours @ 20°C, or 1.5 hours @ 25°C. Apply the mixed Epotread 1000 to the prepared surface evenly by roller using a 10mm roller sleeve. If using an airless sprayer, the first coat application should be assisted with a roller to ensure no air is trapped in the substrate. Thin 20% with clean water for the first coat only. Avoid thinning for subsequent coats.

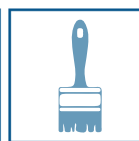


PACK SIZES



20 Litre
8 Litre
4 Litre

APPLICATION



EPOTREAD™ 1000 COLOURS

Guide only, other tinted colours available. Also in clear.



CLEANING TOOLS

Equipment and tools should be cleaned immediately after use with hot water and detergent. Cured material can be removed with fine sandpaper.

SPECIFICATION CLAUSE

Concrete areas so designated shall be coated with Epotread 1000 waterbased epoxy as supplied by Regis Coatings. This shall be applied to the prepared surface in accordance with the Regis Coatings current product data sheet.

PACKAGING

Epotread 1000 is available in 4 litre, 8 litre and 20 litre packs. Each pack consists of two components (Part A and Part B). The total quantity comprises the pack size, eg. the 20 litre pack includes 10 litres of Part A plus 10 litres of Part B.



Epotread™ G31 - Gloss

WATERBASED EPOXY FLOOR & WALL COATING

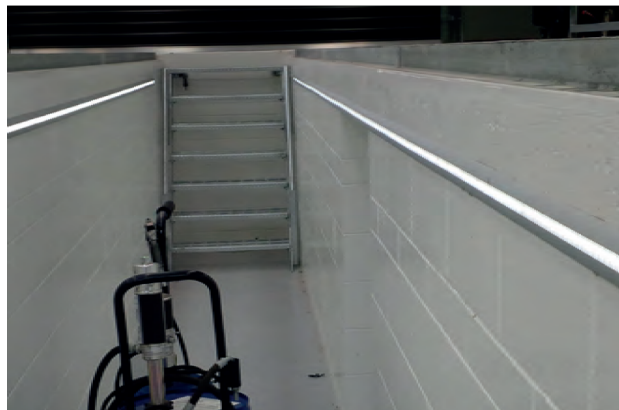
Epotread G31 is a high gloss, non-toxic, high performance epoxy resin coating supplied in an attractive easy clean finish.

PRODUCT FEATURES

- Easily applied by brush or roller
- Bright, easy clean surface
- Low odour
- Twin pack
- Very durable
- High chemical resistance
- 1:1 ratio mix

USES

- Showrooms
- Hygienic areas
- Workshop Pit Walls
- Laboratories
- Toilet facilities
- Parts rooms
- Dairy Walls

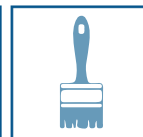


PACK SIZES



20 Litre
8 Litre
4 Litre

APPLICATION



Epotread™ Epoxy Clear

PREMIUM CLEAR WATERBASED EPOXY FLOOR COATING

Clear waterbased epoxy sealer for concrete and timber floors. Epotread epoxy clear has a very low-odour during application and the finish has excellent chemical resistance properties. Simply apply by roller at approx 9-11m²/litre per coat. Coverage rates may vary depending on the porosity of the substrate. One or two coats may be applied.

PRODUCT FEATURES

- Two-pack non-toxic epoxy, easy to mix
- Simple 1:1 mix ratio
- Waterbased - easy clean up
- Chemical resistant finish
- Low odour - ideal in shopping malls
- Very hardwearing

USES

- Shopping malls
- Warehouses
- Storerooms
- Car Park buildings
- Protection from mild chemical attack
- Dust sealer



PACK SIZES



4 Litre
8 Litre
20 Litre

APPLICATION



Creutex™ TR

TOWEL GRADE EPOXY FILLER

Creutex TR is an exceptionally high strength epoxy floor repair mortar.

PRODUCT FEATURES

- Rapid cure. Extremely hard in 12 hours!
- 1:1 ratio mix
- 60 minutes working time
- No primers needed
- Incredible adhesion to clean concrete
- High chemical resistance
- Non-toxic and solvent free

USES

- Floor cracks, chips, holes etc
- Spalled concrete floors
- Eroded concrete floors
- Repairs to step edges
- Floor coving
- Creating ramps for wheeled traffic
- Concrete kerb repair

DIRECTIONS

1. Combine Part A with Part B at equal quantities.
2. Wear disposable gloves and knead with your hands until 2 parts are thoroughly mixed.
3. Use a moistened trowel to apply Creutex TR into cavity.

TIP Keep gloves and tools wet with water for easy application. To save time Creutex TR can be overcoated immediately with Epotread floor coatings.



PACK SIZES

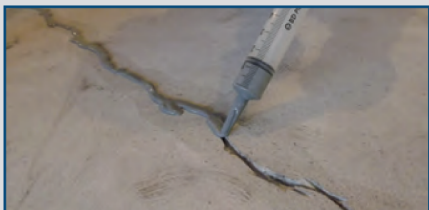


4 Litre
1 Litre

APPLICATION



High Strength - Two Component Epoxy



Creutex™ SL

SELF LEVELLING POURABLE EPOXY FILLER

Creutex SL is a high strength three-part aggregate filled pourable epoxy resin used to bond loose concrete slabs and cracks in concrete floors and provide an extremely tough, rapid setting floor surface in high traffic areas.

PRODUCT FEATURES

- Convenient mixing
- Non-toxic and solvent free
- Rapid cure. Extremely hard in 6 hours!
- 45 minutes working time
- Primers not normally required
- Incredible adhesion to clean concrete
- Chemical resistant

USES

- Filling floor cracks, chips, holes etc.
- Spalled concrete floors
- Eroded concrete floors
- Dairy and food industry floors
- Setting of reinforcing rods into concrete
- Structural concrete repairs



PACK SIZES



6 kg / 4.5 litre
2 kg / 1.5 litre

APPLICATION



Epotread™ SL250

AGGREGATE FILLED WATERBASED EPOXY SCREED

Epotread SL250 epoxy floor topping is self-smoothing and contains a special blend of graded aggregates designed to fill worn or rough concrete, providing a tough and durable floor surface.

PRODUCT FEATURES

- Low odour, non-toxic
- Levels uneven surfaces
- Apply at .5 - 10mm thick
- 3 Component mix
- Extremely durable surface
- Can be overcoated with other Epotread coatings to achieve the desired finish.

USES

- Hygienic areas
- Ablution areas
- Bakeries
- Apiaries
- Plant rooms
- Dairies
- Levelling eroded areas



PACK SIZES



10 Litre
10 litre pack
consists of Part A,
Part B and Part C
pre-packed in
correct ratios.

APPLICATION



Cretex™ PU

POLYURETHANE EXPANSION JOINT SEALANT

A tough, gun-applied, fast curing sealant for filling saw cuts and floor joints. Cretex PU is chemical resistant and withstands vehicle traffic.

PRODUCT FEATURES

- Single component
- Accommodates normal floor joint movement
- Excellent adhesion to concrete, steel and timber

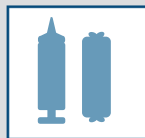
USES

- Floor joints
- Concrete saw cuts
- Cracks
- Seismic Joints
- Panel Joints

**AIR OPERATED SEALANT GUNS AVAILABLE
FOR HIRE OR PURCHASE**



PACK SIZES



600ml Sachets
300ml Cartridge

APPLICATION



Cretex™ Fairing Cream

FINE SPREADABLE EPOXY REPAIR CREAM

Cretex fairing cream epoxy is a lightweight, high strength, sandable filler for filling small imperfections in floors & walls

PRODUCT FEATURES

- Epoxy hardness & adhesion
- Easy to apply with spatula
- 1:1 Mix ratio
- Sands or grinds well
- Small particle size allows for fine filling
- Apply Epotread over before cured

USES

- Hole filling
- Superficially filling cracks
- Screw and nail holes
- Smoothing and sanding



PACK SIZES



500ml

APPLICATION



CONCRETE TREATMENTS



Creutex™ AR

CLEAR PENETRATING MASONRY & DRIVEWAY SEALER

Creutex AR is a clear penetrating solvent acrylic solution with excellent durability against moisture and soiling.

PRODUCT FEATURES

- Fast drying (1 hour)
- Single Pack
- No mixing required
- Water repellent
- UV Resistant
- Helps prevent moss growth

USES

- Driveways
- Patios
- Exposed aggregate
- Water repellent surface for Brick/Blockwork/Stone
- Primer for acrylic coatings
- Butynol coating

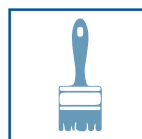


PACK SIZES



20 Litre
4 Litre

APPLICATION



Hydrochloric Acid

TECHNICAL GRADE 33% - SPIRITS OF SALTS

Hydrochloric Acid etching is recommended for preparation of unpainted concrete floors. This economical process will normally remove surface laitance and roughen the smooth concrete to provide an improved 'key' for floor coatings.

DIRECTIONS

1. Dilute Hydrochloric Acid with water as directed.
2. Apply to floor area using a plastic watering can.
3. Scrub in with broom for 3 minutes.
4. Once the acid has neutralised, wash off by waterblasting.



PACK SIZES



20 Litre
5 Litre
1 Litre

APPLICATION



Omni-Wash

BIODEGRADABLE ALL-PURPOSE DETERGENT

Omni-Wash is a powerful degreasing solution specially formulated for floor surface preparation. Omni-Wash can be applied at various dilutions to remove oil and grime.

PRODUCT FEATURES

- Removes oil, grease, fat and dirt with ease!
- Non toxic, biodegradable
- Dilute up to 40 parts water: 1 part Omni-Wash for floor cleaning
- Simply scrub in, wait 15-20 minutes, and hose off.
- Cleans the worst floors
- Can be used undiluted for tough oil and grease deposits

USES

- General Degreasing
- Factory Floors
- Workshop Floors
- Pre-paint Cleaner
- Ovens & Barbeques

Superior Oil Remover!



PACK SIZES



20 Litre
5 Litre
1 Litre

APPLICATION



Duromatic™ EP Hibuild

THIXOTROPIC WATERBASED EPOXY SEALER COATING

Duromatic EP Hibuild is a two pack waterbased epoxy hibuild coating used to seal and coat a range of surfaces. It cures to form an extremely durable, water and chemical resistant finish with superior adhesion to sound concrete, withstanding hydrostatic pressures of up to 40 psi depending on stability of substrate.

PRODUCT FEATURES

- Waterbased, low odour, nonflammable, user friendly
- Excellent adhesion
- Applicable to damp surfaces including green concrete
- Resists hydrostatic pressure when cured
- Excellent oil resistance
- Excellent water resistance
- Available in white or grey

USES

- Moisture barrier on damp walls and floors
- Underground car park walls etc
- Waterproofing concrete floors before timber, tile or carpet and overlays
- Sealing tanks, reservoirs and water troughs
- Primer for bitumen and for acrylic membrane
- Can be overcoated with Epotread G31 for gloss finish



PACK SIZES



20 Litre
8 Litre
4 Litre
1 Litre

APPLICATION



The Solution For Those Damp Basements!

Duromatic™ AC

FLEXIBLE ACRYLIC WATERPROOFING MEMBRANE

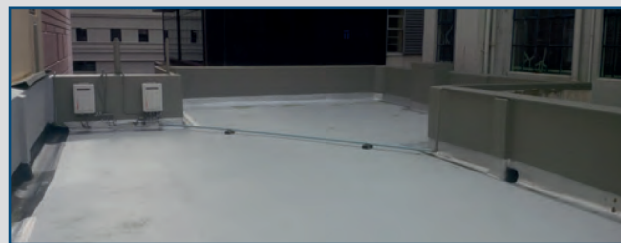
Duromatic AC is a superior proven, weather resistant, liquid applied waterproofing membrane coating. Duromatic AC is suitable for use on concrete structures and roofing and cures to form a seamless and lap-free membrane over the substrate.

PRODUCT FEATURES

- Waterbased and non-toxic
- Single pack, simple to apply by brush or roller
- Withstands constant water immersion
- Fast drying
- Retains flexibility
- Available in white or grey

USES

- Concrete blocks
- Concrete roofs
- Grain silo bases
- Truck/caravan roofs
- General waterproofing
- Tile roofs



PACK SIZES



10 Litre
4 Litre

APPLICATION



Duromatic™ ACS

FLEXIBLE ACRYLIC UNDER TILE WATERPROOFING MEMBRANE

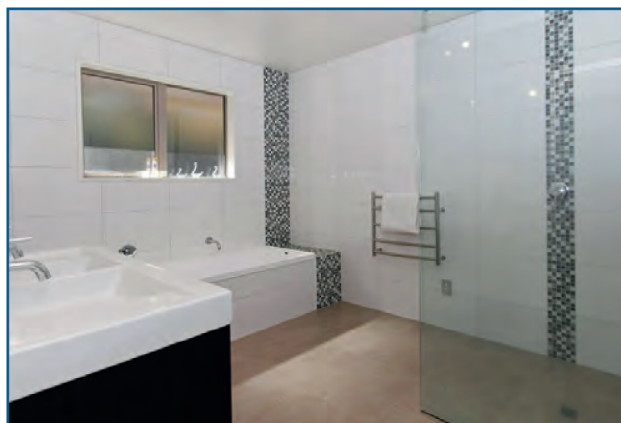
Duromatic ACS is a superior liquid applied membrane which is proven to give outstanding waterproofing under tiled areas. Duromatic ACS is suitable for use with most common building materials and cures to form a seamless and lap-free membrane over the substrate.

PRODUCT FEATURES

- Waterbased and non-toxic
- Single pack, simple to apply by brush or roller
- Withstands constant water immersion
- Fast drying
- Retains flexibility
- ABSAC approved
- Compatible with most common tile adhesives

USES

- Showers
- Bathrooms
- Ablutions
- Balconies
- Other tiled wet areas



PACK SIZES



10 Litre
4 Litre

APPLICATION



BITUMEN COATINGS



Duromastic™ BE-3

BITUMEN WATERPROOFING EMULSION

Duromastic BE-3 bitumen emulsion is a single-pack, non-fibrated, stable water-borne emulsion which cures to form a firm and flexible waterproofing membrane.

PRODUCT FEATURES

- Easy application – Single pack
- Water-based and nontoxic.
- Flexible resilient waterproofing barrier
- No flow or sagging
- Excellent adhesion

Overcoat with Gilsonite Aluminium for U.V. Protection. See page 12.

USES

- Waterproofing concrete, masonry and timber
- Non Toxic water tank lining
- Retaining walls
- Planter boxes
- Steel protection
- Rusted roofs
- Timber end protection
- Planter boxes
- Water features



PACK SIZES



20 Litre
10 Litre
4 Litre

APPLICATION



Duromastic™ Ultra

ELASTOMERIC SBS MODIFIED WATERPROOFING COATING

Duromastic Ultra is an elastomeric waterbased bitumen emulsion that provides long lasting waterproofing on applications which require enhanced elongation characteristics.

PRODUCT FEATURES

- Non toxic
- Easy to apply
- Completely seamless and lap free membrane
- Safe to use – water-based with no harmful vapour.
- No flow or sagging of the film at elevated temperatures even on vertical surfaces.
- Can be applied to damp surface such as green concrete surface.

USES

- Concrete roofs, Retaining walls, External concrete walls, Exposed metal roofing
- Rejuvenation of asphalt roofing
- Planter Boxes
- Water Features

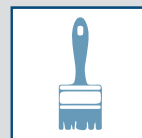


PACK SIZES



10 Litre
4 Litre

APPLICATION



Duromastic™ SB-4

PROTECTIVE BITUMEN PENETRATION SEALER

Duromastic SB-4 bitumen paint is a low viscosity blend of selected hard grade bitumens in solvent which dries to form a high quality tough film.

PRODUCT FEATURES

- Easy and inexpensive to apply
- Does not taint water
- Quick drying
- Excellent adhesion to common building substrates
- High coverage rates
- Tough bitumen film formed

USES

- Corrosion protection to metal surfaces
- Concrete protection
- Primer prior to application of other bituminous coatings
- Vapour barrier
- Cray Pots
- Steel Casting Protection



PACK SIZES



20 Litre
4 Litre

APPLICATION



Duromastic™ SB-150

FIBRE FILLED HIGH BUILD BITUMEN COATING

Duromastic SBE 150 is a medium viscosity versatile bituminous coating containing synthetic fibre and a special blend of solvent based bitumens.

PRODUCT FEATURES

- Very good resistance to water, mud, and most salt solutions
- Very good adhesion to steel, concrete, asphalt and bitumen surfaces
- High impact resistance
- Vehicle underbody sealing

USES

- Corrosion protection of metal exposed to salt, mud and outdoor weathering
- Resists cracking or chipping under vehicle vibration and impact from flying stones
- For the repair of roof leaks on metal, concrete or bitumen roofing, where rain is likely before complete curing

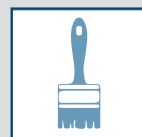


PACK SIZES



20 Litre
4 Litre

APPLICATION



Duromastic™ DPS

FIBRE FILLED HEAVY DUTY PROTECTIVE COATING

Duromastic DPS is a thick, dark, fibre-reinforced coating specially formulated to provide outstanding corrosive resistance to salts, water, mud and weathering.

PRODUCT FEATURES

- Withstands vehicle vibration and impact from flying stones.
- Provides sound deadening on metal surfaces
- Quick drying
- Excellent adhesion to prepared surfaces
- Reinforced with synthetic fibre
- Flexible and resilient

USES

- Undersealing and seam sealing of motor vehicles and trailers
- Corrosion protection to metal surfaces in marine environments
- Protection of agricultural equipment and steel structures
- Sound deadening in steel buildings



PACK SIZES



20 Litre
4 Litre

APPLICATION





Duromastic™ Silverleaf

FIBRE FILLED REFLECTIVE SOLVENT BASED BITUMINOUS PROTECTIVE COATING

PRODUCT FEATURES

- Self priming
- Easy application
- Good solar reflectivity
- Single pack
- UV Stable
- Rust protection
- High build
- Single application

USES

- Boat trailers
- Machinery
- Steel structure
- Penstocks
- Asphalt roofs
- Roof repairs
- Roof gutters



PACK SIZES



20 Litre
4 Litre

APPLICATION



Duromastic™ Asphalt Rejuvenator

PROTECTIVE BITUMEN PENETRATION COATING

Low viscosity hard grade bitumen paint which dries to form a refurbished black surface on asphalt.

PRODUCT FEATURES

- Single pack
- Easy to apply by roller or brush
- Quick drying
- Tough bitumen film formed
- Excellent adhesion to dry surfaces

USES

- Driveways
- Forecourts
- Paths
- Steel drain covers

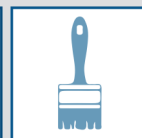


PACK SIZES



20 Litre
4 Litre

APPLICATION



Gilsonite Aluminium

BITUMEN BASED ALUMINIUM ROOF COATING

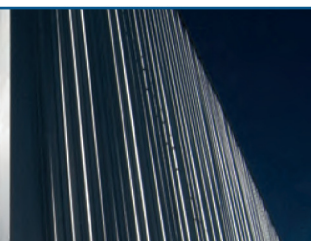
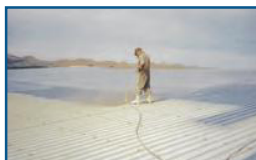
Gilsonite Aluminium is a bitumen based aluminium protective coating for roofing and exterior surfaces including galvanised iron, butyl rubber, bitumen, coloursteel and other pre-painted surfaces.

PRODUCT FEATURES

- Long Lasting
Service life 8 to 20+ years before a further coat is required
- Self Priming
No extra primers are needed when coating metal surfaces, except where rust is present
- Superb adhesion - Non flaking
Will not peel or bubble, provided suitable preparation is carried out
- Easy application
Apply by brush or airless sprayer
- High solar reflectivity
Silver colour reduces building temperature in summer conditions
- Single pack - simple to use
- UV stable
Withstands prolonged severe UV radiation
- Rust protection
Provides superior protection from rusting and considerably extends life of roof
- Still the longest lasting roof coating
- manufactured and applied in NZ since the 1950's

USES

- Warehouses
- Workshops
- Factories
- Hangars
- Wineries
- Apiaries
- Garages
- Sheds
- Weathered galv steel

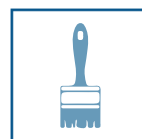


PACK SIZES



20 Litre
4 Litre

APPLICATION



Duromastic™ M17

SEALER FOR ASBESTOS CEMENT ROOFING

Duromastic M17 is a solvent based oxidising polymeric sealer specially formulated to seal weathered asbestos cement roofing, locking out moisture and preventing further fibre release.

PRODUCT FEATURES

- Encapsulates fibres
- Quick Drying
- Excellent adhesion
- Single pack (no mixing)
- Can be overcoated with Duromastic AC or Gilsonite Aluminium
- UV resistant
- Reduces roof weight in rain

TIP: Carry out repairs to cracks in asbestos roofing using Duromastic AC and fibreglass. This is an impressively simple process!



PACK SIZES



20 Litre
4 Litre

APPLICATION





REGIS COATINGS LTD

PO Box 7585, Christchurch 8240 NZ
127 Antigua Street, Addington Christchurch
ph: 03 962 6387 | fax: 03 371 7231 | sales@regiscoatings.co.nz

www.regiscoatings.co.nz

Distributor:
Versatile Products
61 Fourth Street
Tauranga
07 577 0195